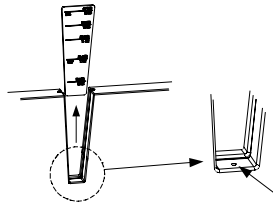
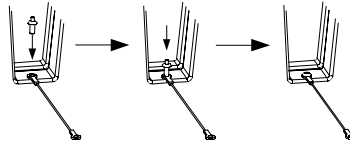


SinBad SIGHTGLASS WITH LANYARD 826-1737

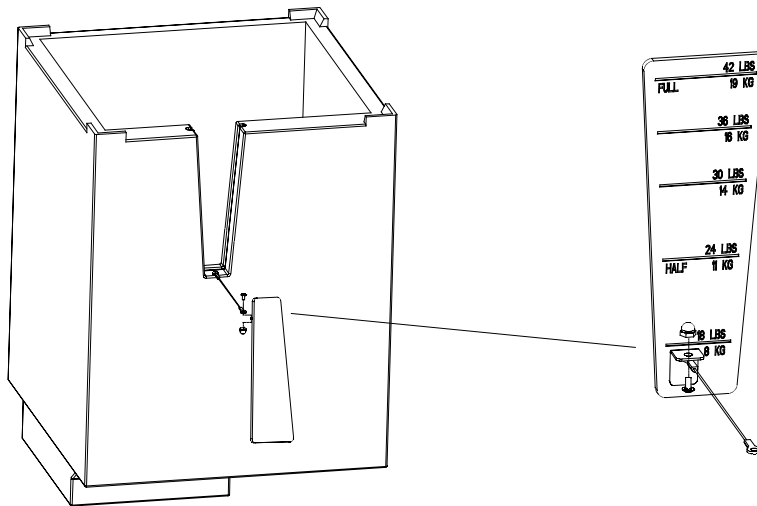
INSTALLATION INSTRUCTIONS



1. Remove old sight glass and drill a 3/16" hole.



2. Place lanyard end over hole and install rivet. Hammer the rivet in. The pin top should be flush with head of anchor when installed.



3. Connect the new sight glass to the lanyard as shown above.

4. Installation is complete.

